

MAYPEARL ISD

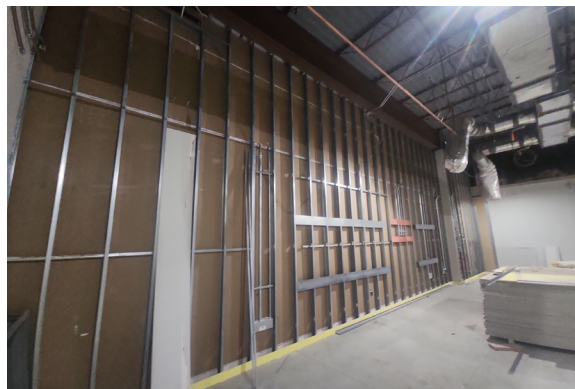
HIGH SCHOOL AND MIDDLE SCHOOL ADDITIONS

CONSTRUCTION UPDATE

- CTE ONE-SIDED INSULATION INSTALLATIONS ARE COMPLETE.
- UNDERGROUND PLUMBING INSTALLATIONS ARE IN PROGRESS.
- CTE WALL FRAMING IS IN PROGRESS.
- MECHANICAL, ELECTRICAL, AND PLUMBING OVERHEAD ROUGH-INS ARE IN PROGRESS.

COST SUMMARY

HIGH SCHOOL CONTINGENCIES	
Construction Contingency Balance:	\$66,171
Owner Contingency Balance:	\$145,968
MIDDLE SCHOOL CONTINGENCIES	
Construction Contingency Balance:	\$147,602
Owner Contingency Balance:	\$66,962
TOTALS	
Total Budget:	\$35,166,660
Total Completed & Stored To Date:	\$29,962,557
Percentage Complete:	85%



DIFFERENT FROM THE GROUND UP



GALLAGHER
A CUMMING GROUP COMPANY