

MAYPEARL ISD

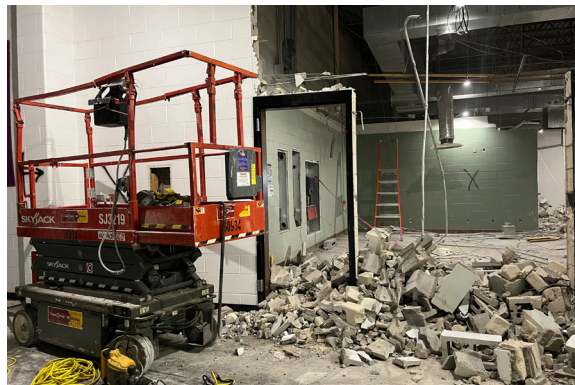
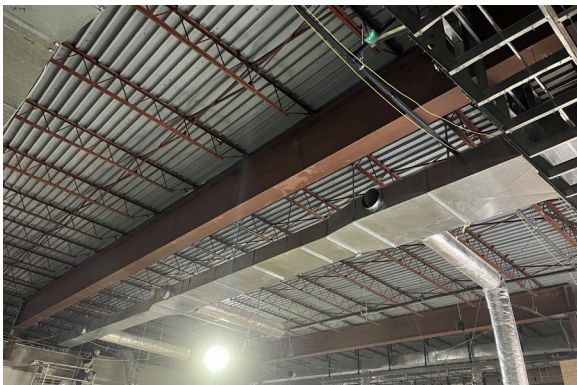
HIGH SCHOOL AND MIDDLE SCHOOL ADDITIONS

CONSTRUCTION UPDATE

- MECHANICAL, ELECTRICAL, AND PLUMBING MAKE SAFES ARE COMPLETE.
- LOW WALL MASONRY DEMOLITION IS COMPLETE. PAVERS ARE BEING SAVED AND STORED.
- DEMOLITION OF THE EXISTING CEILING, WALLS, AND FLOORING IS NEARING COMPLETION.
- NEW STEEL COLUMN WORK IS SCHEDULED TO BEGIN SOON.
- ROOF-TOP UNIT SUPPORT INSTALLATIONS ARE SCHEDULED TO BEGIN SOON.
- OVERHEAD MECHANICAL, ELECTRICAL, AND PLUMBING INSTALLATIONS ARE SCHEDULED TO BEGIN SOON.

COST SUMMARY

HIGH SCHOOL CONTINGENCIES	
Construction Contingency Balance:	\$2,751
Owner Contingency Balance:	\$156,199
MIDDLE SCHOOL CONTINGENCIES	
Construction Contingency Balance:	\$254,552
Owner Contingency Balance:	\$66,962
TOTALS	
Total Budget:	\$35,166,660
Total Completed & Stored To Date:	\$28,626,544
Percentage Complete:	81%



DIFFERENT FROM THE GROUND UP

